

FELTON BORO TO HAVE SPRING BUILDING BOOM

FAMILIES WAITING TO TAKE UP
RESIDENCE IN GROWING
COUNTY TOWN

INCORPORATED IN 1899

(By a Staff Correspondent)

Felton, Oct. 15. — This busy little borough of 85 homes and 400 population is preparing for a building boom next spring. Contracts for the reection of seven dwelling houses have been let and other operations are being planned. By next fall it is expected, Felton will have more than 100 hoomes and will have entered upon a new era of development. As rapidly as houses are completed, they will be occupied, as there are many families waiting to move into this borough. Along with the building boom planned for next spring, means will be adopted by the citizens to attract more industries here. Desirable factory sites are available. With the spirit of enterprise now inbuing its leading citizens, Felton certainly has a promising future.

Since 1900, Felton has doubled its population and it is one of the few boroughs in the county to show increase in population since 1910.

This borough lies in a beautiful little valley, along the upper waters of Muddy Creek. Timbered hills surround the town, which is situated 536 feet above the sea level, on a plain along the line of the Maryland and Pennsylvania railroad, 14 miles from York and five miles from Red Lion. The railroad ascends at a grade of 85 feet to the mile, to Red Lion which is 829 feet above the level of the Atlantic ocean.

The land occupied by Felton was surveyed from the townships of Chanceford, Lower Windsor and North Hopewell by Stephen A. Douglass in 1899 and the borough was incorporated in that year. In that period the growth of the town was rapid. Thomas G. Criss, who was elected prothonotary of York County in 1871, was the first merchant to open a store here. The store he founded continued today, under other ownership and management.

Tobias Crumbling built a grist mill on the site of the town in 1863. The mill thus established is operated today by the Felton Milling Company, H.E. Hake, manager. Flour, meal and stock feet are produced at this mill and large shipments are made by rail and motor truck.

The cigar industry leads in Felton. The cigar factories here are those of Heineman Bros., Baltimore, 70 employes; L. E. Sentz, 45 employes, and S. M. Downs, 30 employes. B. S. Sentz operates a cigar box factory, employing 10 people. The York Sanitary Milk company has established a receiving station here.

The Felton Store company conducts two stores in the borough, C. C. Seitz is manager of No. 1 store and A. N. Shanks is manager of No. 2 store. Grove and Strayer's garage is well equipped and is proving a successful enterprise. Other business establishments are: C. L. Hoffman's meat market; B. F. Tyson, painter, paper hanger and decorator; Nathaniel Smith, building contractor, and C. S. Lutz, barber.

The first officers of this borough wre: Christian T. Grove, chief burgess, Jacob Gable, Henry Seitz, James E. Sechrist, John T. Hannigan, Theodore Akins and Amos Moore, council; Charles W. Moore, assessor.

This is the personnel of the present borough government: Chief Burgess, B. S. Sentz; council, L. E. Sentz, president; J. P. Reichard, S. S. Grove, S. M. Downs, A. H. Grove, J. C. Gable and A. C. Snyder; clerk to council, W. H. Flinchbaugh; justices of the peace, B. S. Sentz and W. N. Hannigan; constable, S. M. Downs; tax collector, W. R. Hannigan; assessor, M. E. Seitz.

In 1883, the citizens residing on the boundary meeting point of three townships petitioned the court for an independent school district. The petition was granted and a frame school building was erected. The borough today has a modern school building of two rooms. The school directors are: C. C. Seitz, president; J. W. Shenberger, vice president; H. G. Seitz, secretary; H. F. Hershner, treasurer; A. H. Grove. The schools of the borough consist of eight grades. The teachers are Miss Abbie Flinchbaugh and Miss Mazie Grim.

People of the Lutheran denomination built a church here in 1884 and dedicated it as St. Paul's Lutheran church. The congregation was organized by the Rev. Peter Livingston, who was its first pastor. The present pastor is the Rev. C. H. Shull.

The United Evangelical congregation of Felton was organized by the Rev. E. Fulcomer in 1898 and a church was subsequently built. The Rev. H. G. Guthrie serves this charge.

A hall in one of the store buildings is used by lodges and as a community hall. Orders represented here are the Knights of Phtuias and Improved Order of Red Men.

Felton has a band of county wide reputation as a musical organization of talent. The

officers are: L. E. Sentz, president; J. C. Hake, secretary and H. C. Heim, conductor and instructor.

Another organization, in which the people of Felton take pride, is their baseball club, which is managed by Charles Tieman. The Club has had an active and successful season.

A public park, near the center of the town, neatly laid out and kept in good condition, shows that the people of Felton have the right sort of spirit for these times. An ornament to the park is a memorial shaft erected to those of Felton's sons, who made the supreme sacrifice in the late war. The memorial is of concrete and is the work of local designers and artisans. A machine gun is mounted near the monument.

A part of the borough has public water supply. It is a gravity system with a reservoir located above the town. Other utilities are telephone and telegraph service and electric lighting.

Improvements in prospect are extension of water supply, a fire company and a public library. Felton has set out to grow and it is going to grow according to the ambition of its citizens, who are wide awake. The town has felt but little of the business depression of the times. There is wealth in the community, the people are industrious and they are bent upon seeing Felton occupy a more conspicuous place on the map of York County.

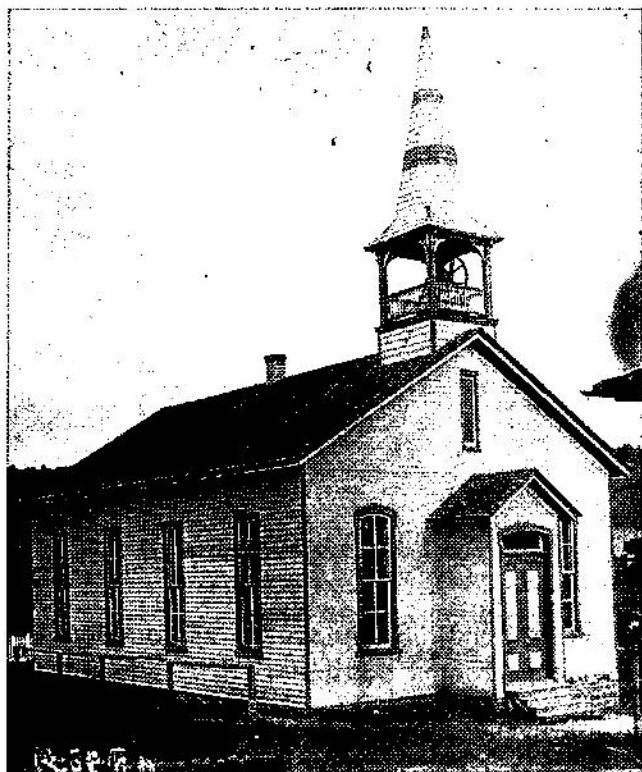
Shipping facilities afforded by the M. and P. railroad have been a factor in the growth of Felton. The town has become a shipping point of considerable importance. There are shipped from this station: Potatoes, hay, cord wood, cigars, our and feed. Shipments received are coal, lime, cigar box lumber, cement, building materials, fertilizer, farm implements and general merchandise. N. T. Logan, station agent, has been in the service of the M. and P. railroad for 25 years and has been freight, passenger and express agent, here for 20 years.

Nearly 800 outbound freight cars are handled here in a year and the number of inbound cars received reaches 400 a year. These figures are approximate. The outbound shipments vary according to extent of crops and activity of local industries.

C. C. Seitz is postmaster at Felton.

Felton Bethany United Methodist Church

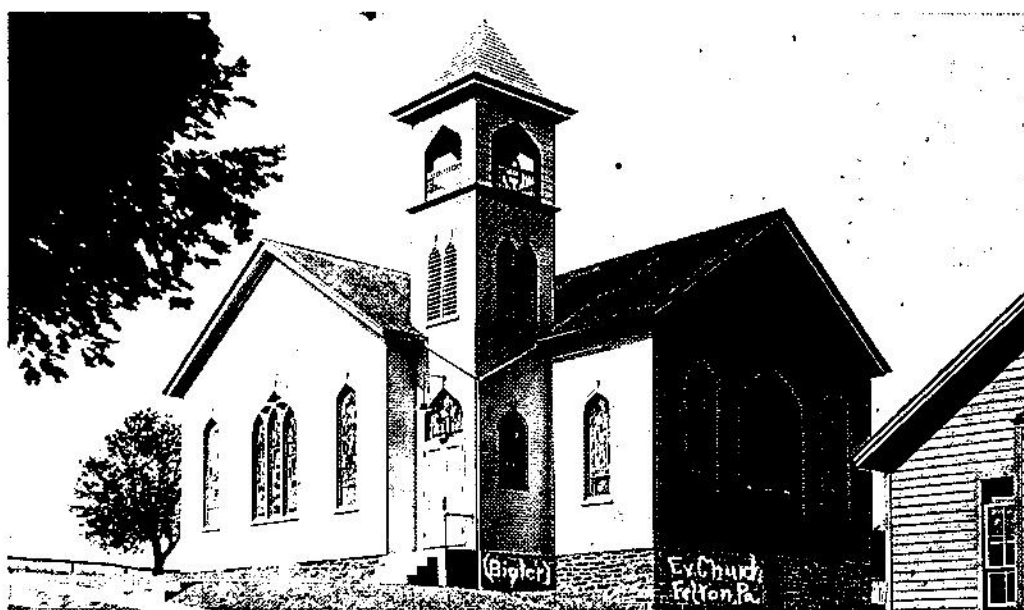
Bethany United Methodist Church of Felton originated from Trinity Church of the Evangelical Association which was founded in 1871 just north of Felton in Chanceford Township. A group from Trinity Church of Chanceford Township bought the Trinity Church building of York. The building then was moved to Felton, some on wagons, some by rail. This became the Felton United Evangelical Church.



BETHANY EVANGELICAL CHURCH 1896

No records were kept until March 9, 1906 when Pastor G. L. Maice recorded a brief summary. We do not have the names of the people who founded the Felton Church. It is thought there were about twenty in number. In the month of November 1896 during the Pastorate of Rev. E. Fulcomer, the Church was dedicated as Bethany Evangelical Church of Felton, Pa. Early in the conference year 1908-1909, negotiations were made to recover the Trinity Church. The property was secured and on Friday, Nov. 13, 1908 Trinity Church was deeded to the Trustees of the Felton Church. November 22 the Church was reopened, a service was held and enough money was raised to pay for the Church and build a fence around the graveyard.

By 1909 the Felton Church had grown and needed more room. So in the conference year 1910-1911, work began to enlarge the Church. During this time the parsonage was situated on High Street. In 1920 land was deeded to the



BETHANY EVANGELICAL CHURCH 1911

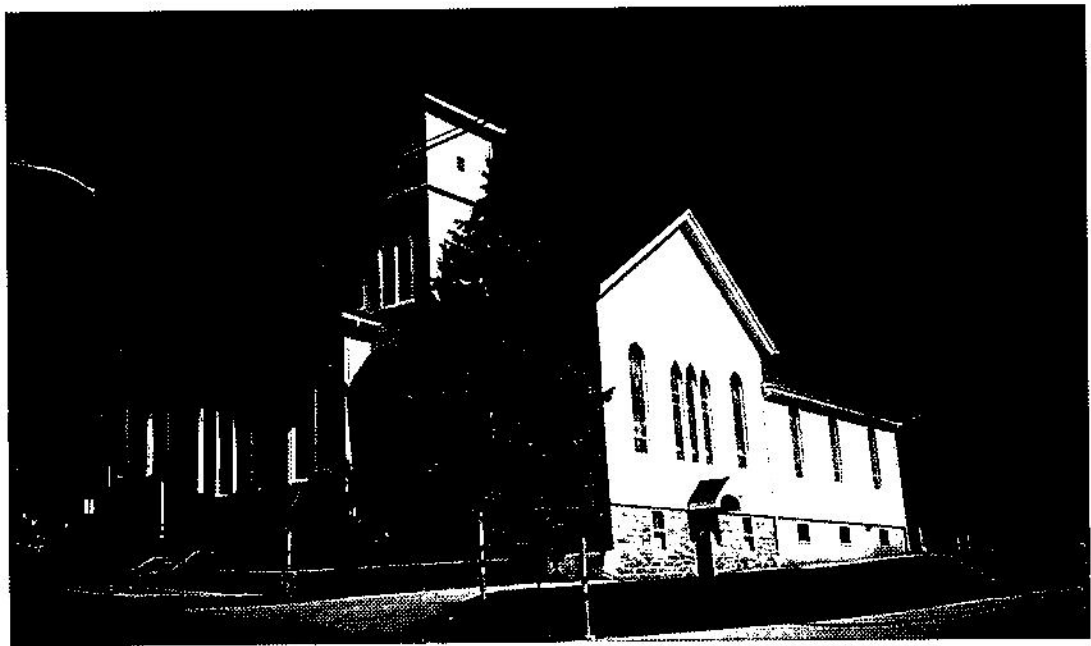
Parsonage Trustees and a new parsonage was built by Clayton Gable and J. T. Sents. The old parsonage was sold to William Grove.

While Rev. Baker was pastor of Bethany Church and Rev. Laird was pastor of Lebanon Lutheran Charge, one of the outstanding events was the Bible School It was very successful and united the students creating a good atmosphere.



PRESENT PARSONAGE

The third major addition to the church was dedicated in October 1953. The work was done by Curvin Paules -- a 1630 square foot addition which provided class rooms, a kitchen, office and storage space. Part of the basement was converted to a rest room and a nursery. A new altar rail and choir enclosure had been installed. Also the chancel and choir loft had been lowered.



BETHANY UNITED METHODIST CHURCH, FELTON, PENNSYLVANIA - PRESENT CHURCH

The Felton Charge consisted of St. Paul's Church, Winterstown, Bethlehem Stonepile, Springvale and Felton. St. Paul's Church Winterstown merged with Emmanuel Church of Winterstown in 1959 leaving Felton a three Church Station. In 1975 Felton bought the shares of Bethlehem and Springvale Parsonage and was given station status. Rev. Darby Nace became pastor.

The Church recently celebrated its 100th Anniversary, April 28, 1996 honoring the 50 year members, singing old songs and reminiscing with former members and pastors.

List of Ministers:

Rev. E. Fulcomer	1896-1898
Rev. F. H. Foss	1898-1901
Rev. E. Fulcomer (2nd).....	1901-1902
Rev. W. C. Hoch	1902-1905
Rev. G. L. Maice	1905-1909
Rev. J. H. Furner.....	1909-1913
Rev. A. M. Jenkins.....	1913-1918
Rev. H. C. Guthrie.....	1918-1922
Rev. J. F. Rohrbaugh.....	1922-1929
Rev. I. K. Baker.....	1929-1936
Rev. H. S. Entz.....	1936-1943
Rev. L. P. Markley	1943-1948
Rev. A. M. Jenkins (2nd).....	1948-1950
Rev. T. R. Husler.....	1950-1957
Rev. T. R. Jones.....	1957-1965
Rev. P. L. Haugh.....	1965-1972
Rev. T. Burkett.....	1972-1973
Rev. D. Ashby.....	1973-1975
Rev. D. J. Nace.....	1975-1983
Rev. M. J. Shearer.....	1983-1984
Rev. T. E. Jones.....	1984-1994
Rev. T. A. Funk.....	1994-1998
Rev. Judi Smith	1998

